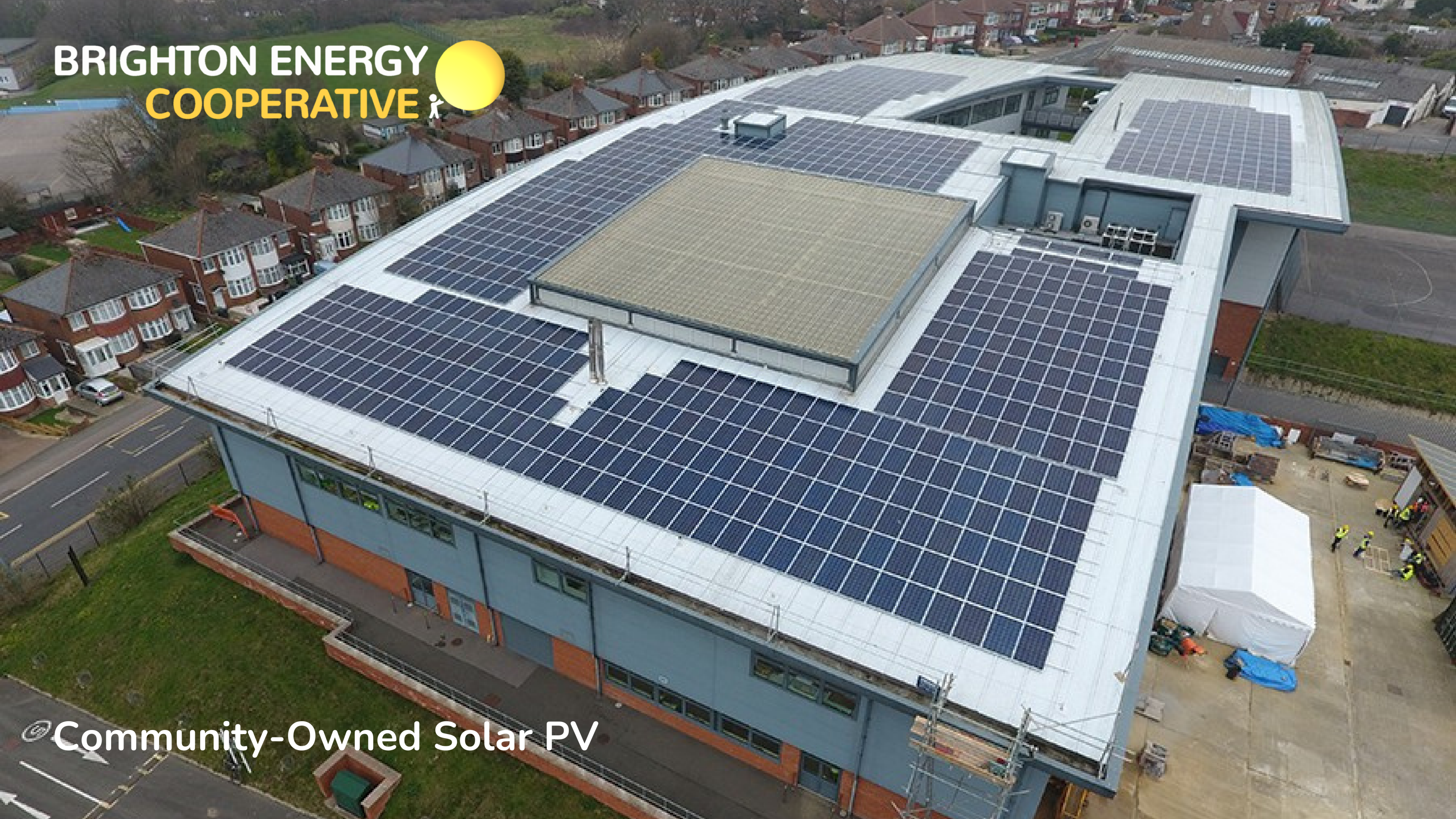


**BRIGHTON ENERGY**  
**COOPERATIVE** 



 **Community-Owned Solar PV**

# A Trusted Solar Partner

A **community-owned** initiative, BEC is the long-term solar **partner of many organisations** in the south. We rent roofspaces, install solar panels and **supply our hosts with affordable solar electricity.**

We work with a growing range of businesses and institutions:

- **Local Authorities:** Brighton and Hove City Council, Adur and Worthing District Council.
- **Business Owners:** Ports, leisure centres, museums, engineering companies, logistics hubs, football clubs, and two wine estates.
- **Educational Institutions:** The University of Brighton, Greater Brighton Metropolitan College, and fifteen schools.



# Energy Education: Our Work in Local Schools

We are dedicated to **supporting local schools** through our innovative **Solar Education Programme**. By partnering with schools, we assist staff in educating children about solar energy and sustainability.

Our educators frequently visit schools to host **interactive workshops**; an always-popular activity is the building and racing of electric cars. This sort of hands-on experience not only excites students but also teaches them about renewable energy in a fun and engaging way

## In-Classroom

We deliver educational materials that help students understand electricity graphs, the function and benefits of solar panels, and undertake projects aligned with the curriculum.

## Assemblies

We engage with eco clubs, select classes, or teacher groups, discussing solar energy and offering opportunities to survey the solar panels installed on school premises.

## Workshops

Our staff lead assemblies focused on solar power, energy conservation, and a school's journey toward decarbonization, inspiring students to think critically about their energy use.



An aerial photograph showing a residential area with several buildings. The central focus is a large building with a red-tiled roof that has several rows of solar panels installed. The surrounding area is filled with green trees and other houses with red roofs. The sky is clear and bright.

“We worked closely with Brighton Energy to install solar PV on our four sites in Worthing and Brighton. BEC have been helpful, responsive to our requirements, and really straightforward to work with.”

**Jon Rollings** Head of Facilities, Greater Brighton Metropolitan College



# Why Choose Brighton Energy?

## Supporting Schools

- Working with BEC, you'll be helping support our education work with local kids

## 3-Year Buyout:

- Signing up with BEC means you have the chance to buyout our solar PV system at year 3.

## Low-Priced Electricity:

- From day one your organisation will benefit from long-term, low-priced solar electricity

## Proven Track Record:

- With 14 years of experience, we consistently deliver lower rates on electricity bills.

## Sustainable Energy:

- Contribute to a greener environment by using renewable solar energy.

# HOW IT WORKS

1

## Site survey

BEC surveys each site and works out solar potential. We then discuss with you how much you can **save** from one of our PV systems.



2

## Structural Survey & Grid Connection

Structural surveys are commissioned by BEC to ensure that the solar PV would be adequately supported. BEC seeks permission from the **grid provider** to ensure sufficient capacity for new electricity generating equipment.

3

## Lease Agreement

If agreeable to both parties, landlords sign a **lease** with BEC for the use of the relevant roof spaces.

4

## Installation

Installation usually takes **2-3 weeks** with minimal disruption for your building. A full handover pack with all documentation and drawings is provided.

5

## Operation and Maintenance

We keep a close eye on our **online monitoring** to record electricity generated and used. We **inspect the system annually** and an independent licensed electrician performs electrical checks.

Nunito

# HOW IT WORKS

## QUALIFICATIONS

All BEC staff have necessary electrical and site management qualifications and DBS checks updated on a regular basis.

## HEALTH & SAFETY

We have a rigorous health & safety policy and ensure all contractors follow BEC criteria, as well as national and local guidelines.

## INSTALLATION

All our subcontractors are MCS certificated and follow CDM regulations. Our installer develops RAMS statements, signed off by the site. Regular site visits by BEC's project development team.

## BUILDING SURVEY

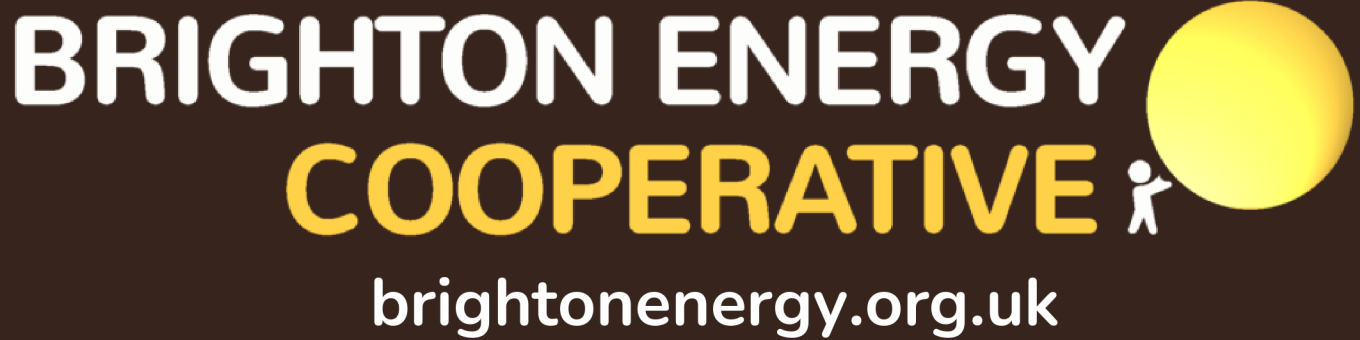
We commission an insured, indemnified and independent structural surveyor to align with MCS requirements and the host site's insurance.

## DESIGN

We commission our installation subcontractor who works in conjunction with our in-house team to design the PV system.

## COMMISSIONING & TESTING

Testing according to the grid and MCS regimes Our installers all hold the relevant NC/EC qualifications.



For a free video review of your solar options, contact us at [brightonenergy.org.uk/review](https://brightonenergy.org.uk/review)